

## ORGANIZATION OF JNCSW

JNCSW features its characteristic as the union of 47 regional councils of social welfare, and it includes various national-level social welfare organizations (15 classified councils, 3 associations of organizations). Working with those organizations or groups, JNCSW is promoting projects to realize a better social welfare system and to improve the quality and expertise of social welfare services.

### Brief History

1908	Establishment of the <b>Central Charitable Association</b> (First President: Mr. SHIBUSAWA, Eiichi)
1921	Name changed from the Central Charitable Association to the <b>Social Work Association</b>
1924	Restructuring of the Social Work Association into the <b>Central Social Work Association</b>
1947	The <b>Central Social Work Foundation</b> merged with Japan Social Work League (former All Japan Private Social Work League) into the <b>Japan Social Work Association</b>
1951	<b>The Japan Social Work Association</b> merged with the <b>All Japan Local Welfare Commissioner</b> and the Help Fellow Society into the <b>Central Social Welfare Council</b>
1952	Restructuring of the Central Social Welfare Council into the <b>National Federation of Council of Social Welfare</b>
1955	Name changed from the National Federation of Council of Social Welfare to <b>Japan National Council of Social Welfare</b>
1987	Completion of Shin-Kasumigaseki Building
1995	Completion of Central Welfare Institute (Lofos Shonan)
2008	Celebration of the centennial anniversary (since the establishment of the <b>Central Charitable Association</b> in 1908)
2020	Formulation of JNCSW Welfare Vision 2020

**Japan National Council of Social Welfare**  
(President: 1, Vice President: 5, Executive Director: 2)

Council of Social Welfare in Prefectures/Cabinet-Order Designated Cities  
Municipal Councils of Social Welfare

National Federation of Minsei-iin/Jido-iin (Community/Child Welfare Volunteers)

**【Organizations of Social Welfare Facilities/Home Care Service】**

《Councils of Social Welfare Facilities》

Japan Social Employment Council

National Council of Facilities for Disabled

National Council of Childcare

National Association of Childcare Worker

National Council of Homes for Children

National Council of Homes for Infants

National Council of Women's Shelter

National Council of Medical Welfare Facilities

National Council of Relief Institutions

《Organizations for Home Care Service》

National Council of Comprehensive Regional Support/In-Home Care Support Centers

《Organizations for Professional Social Welfare Workers》

National Council of Home Helper

Japanese Association of Directors of Social Welfare Institutions

National Council of CEOs of Social Welfare Corporations

National Young Men's Association of Chairmen and Presidents for Social Welfare Corporations

**【Social Welfare Associations】**

Association of Organizations for the Disabled

National Association of Public Welfare Work Organizations

Association of Organizations for Health and Welfare for the Elderly

**Introduction of Activities of National Organizations by Field (as of April 1, 2022)**

(15 classified councils and 3 associations of organizations)

National Federation of *Minsei-iin/Jido-iin* (Commissioned Welfare/Child Welfare Volunteers)



- ★ Support activities of Minsei-iin/Jido-iin Community/Child Welfare Volunteers and Council of Minsei-iin/Jido-iin (Commissioned Welfare/Child Welfare Volunteers) all over Japan
  
- Number of *Minsei-iin/Jido-iin* (Commissioned Welfare/Child Welfare Volunteers): 230,851 people
- Members: Prefectural/Regional/Ordinance-Designated City Council of Minsei-iin/Jido-iin (Commissioned Welfare/Child Welfare Volunteers)
- Role: to support activities of *Minsei-iin/Jido-iin* (Commissioned Welfare/Child Welfare Volunteers) all over Japan

**【Priorities】**

- 1) To provide better circumstances for system/activities of Minsei-iin/Jido-iin (Commissioned Welfare/Child Welfare Volunteers)
- 2) To consider sustainable system/activities of Minsei-iin/Jido-iin (Commissioned Welfare/Child Welfare Volunteers)
- 3) To call understanding of activities of Minsei-iin/Jido-iin (Commissioned Welfare/Child Welfare Volunteers) as well as to call out candidates

## Japan Social Employment Council (SELP)



- ★ Support “life” and “job” of people with disabilities
- Number of members: 1,379 centers
- Role: to develop Support of Employment, Living & Participation (SELP) centers to support “life” and “job” of people with disabilities

### 【Priorities】

- 1) To develop human resource contributing to the society to realize a dream of people with disabilities and staff members of centers
- 2) To contribute to the development of community where is nice to live for everyone
- 3) To develop a society where we live together happily
- 4) To lead a global standard of employment support for people with disabilities through sharing cases in Japan

## National Council of Facilities for Disabled



- ★ Respect the last but not least one who need the most help
- Number of members: 515 facilities
- Members: institutions mainly supporting people with severe disabilities

### 【Priorities】

- 1) To contribute to the development of quality of service through “appropriate care”
- 2) To respond to political measures surrounding welfare for people with disabilities
- 3) To discuss the promotion of a society where we live together

## National Council of Childcare



- ★ Realize “a society where rights and development of every child are affirmed”
- Number of members: 21,604 facilities
- Members: Licenses public/private nursery schools, authorized nursery schools, etc.

### 【Priorities】

- 1) To discuss and make recommendations for challenges of child care especially in population-declining areas
- 2) To respond to the policy/system changes
- 3) To strengthen organizational foundation, to examine how to put finance in order

## National Association of Childcare Worker



- ★ Realize childcare supporting development of every single child
- Number of members: 188,353 people
- Members: childcare workers, nursery teachers, etc. working for licenses public/private nursery schools, authorized nursery schools, etc.

### 【Priorities】

- 1) To conduct childcare responding to the change of society as well as to share information about childcare
- 2) To tackle community support activities
- 3) To strengthen organizations of childcare workers as well as its supporting system
- 4) To advertise how childcare work is attractive

## National Council of Homes for Children

- ★ Assist all homes for children in Japan for their endeavor to take care of children in need of protection and to support their independence after they leave home
- Number of members: 605 institutions
- Members: homes for children where approx. 25,000 children live in total

### 【Priorities】

- 1) To examine the future perspective of homes for children after the establishment of Children and Family Agency as well as the amendment of Child Welfare Law
- 2) To protect child rights and to promote the guarantee of the best benefit of children
- 3) To strengthen efforts to secure/develop/settle human resources
- 4) To strengthen continuous independence support for every single child
- 5) To promote disaster prevention measures as well as to establish support system for large-scale disasters
- 6) To respond to COVID-19 pandemic

## National Council of Homes for Infants



全国乳児福祉協議会

- ★ A nation-wide organization of homes for infants that protect infants and support childcare of parents or guardians
- Number of members: 146 institutions
- Members: homes for infants where approx. 3,500 infants are brought up

### 【Priorities】

- 1) To realize “Total Support Center for Infants” as well as to deepen understanding for it
- 2) To promote the quality of childcare as well as to enhance support
- 3) To respond to COVID-19 pandemic

## National Council of Women's Shelter

- ★ Assist all women's shelters in Japan that support mothers and children
- Number of members: 200 institutions
- Members: women's shelters of which beneficiaries are approx. 3,000 households and 4,870 children

### 【Priorities】

- 1) To promote works towards the realization of “The Vision of National Council of Women's Shelter” as well as to respond to various issues related to the amendment of Child Welfare Law.
- 2) To respond to/prepare for COVID-19 pandemic and other large-scale disasters
- 3) To expand/promote the use of women's shelter
- 4) To strengthen the financial foundation of National Council of Women's Shelter

## National Council of Medical Welfare Facilities

- ★ A nation-wide organization of hospitals or clinics providing free or low-price medical treatment
- Number of members: 150 institutions (hospitals and clinics)
- Members: hospitals or clinics providing free or low-price medical treatment
- Role: Promoting welfare medicine as well as expanding understanding for it

### 【Priorities】

- 1) To conduct a survey on actual situation and problems of free or low-price medical treatment as well as to advertise it (based on the survey on the effect of COVID-19 pandemic, survey on actual situation, etc.)
- 2) To develop support for needy people through the collaboration with other social welfare organizations utilizing its expertise
- 3) To strengthen information sharing and advertisement of free or low price medical treatment activities (website, newspaper, e-mail news, etc.)

## National Council of Relief Institution

- ★ A nation-wide organization of relief institutions where people really in need are welcome
- Number of members: 181 institutions
- Members: relief institutions based on the Public Assistance Law

### 【Priorities】

- 1) To respond to the examination of future prospective of relief institutions based on the amendment of the Public Assistance law
- 2) To promote “Course of Conduct” towards the realization of the inclusive community society as well as information sharing
- 3) To improve the quality of user-oriented individual support as well as support respecting human rights of users
- 4) To promote the visualization of relief institutions

## National Council of Comprehensive Regional Support / In-Home Care Support Centers

- ★ As the core of the comprehensive regional care system
- Number of members: 2,698 centers
- Members: comprehensive regional support centers and in-home support centers
- Role: working for the realization of an inclusive community society

### 【Priorities】

- 1) To expand service responding to the needs of member centers
- 2) To strengthen the organization of the council
- 3) To enhance public relations activities and to strengthen information sharing



## National Council of Home Helper

- ★ Assist home helpers working on the frontline of home care for the elderly
  
- Number of members: 2,357 people
- Members: home helpers
- Role: advocacy/research for home helpers as well as connecting them

### 【Priorities】

- 1) To examine challenges toward the revision of Long-term Care Insurance System and medical/nursing care fees in 2024
- 2) To promote the quality of home visit help service
- 3) To examine the organizational structure

## Japanese Association of Directors of Social Welfare Institutions



- ★ Assist self-improvement and practice of directors/managers of social welfare institutions
  
- Number of members: 855 people
- Members: Directors of Social Welfare Institutions\*
- Role: assisting life-long training of directors of social welfare institutions to improve their own capacity so that they can contribute to the development of institutional welfare/community welfare

### 【Priorities】

- 1) To strengthen the bond of members and to enhance life-long training
- 2) To develop information sharing and practice towards the promotion of collaboration of social welfare foundations
- 3) To activate activities of prefectural branches

\*) “Director of Social Welfare Institution” is the original qualification of JNCSW given by the President of JNCSW to those who complete “Special Course for Directors of Social Welfare Institutions.”

## National Council of CEOs of Social Welfare Corporations



- ★ Assist autonomous management of social welfare corporations
- Number of members: 7,939 corporations
- Members: social welfare corporations running social welfare institutions
- Role: promoting social welfare practices as social resource not only for beneficiaries but also for communities

### 【Priorities】

- 1) To make efforts for recruitment/development/stability of social welfare human resource as well as for effective PR strategies
- 2) To tackle establishment of support system in emergency
- 3) To strengthen efforts for the realization of inclusive community society

## National Young Men's Association of Chairmen and Presidents for Social Welfare Corporations



- ★ Assist development and capacity building of human resource succeeding responsibility of the management of social welfare corporations in the next generation
- Number of members: 1,495 people
- Members: young ( $\leq 50$  years old) chairpersons and presidents of social welfare corporations
- Role: seeking for the right way of management as well as the perfect social welfare service of social welfare corporation

### 【Priorities】

- 1) To rebuild organization structure and means of operation aiming at benefits of members
- 2) To set up committees based on various themes (for example: provision of contents that lead to solutions of problems of members, etc.)

## Association of Organizations for the Disabled

- ★ Improve the welfare of persons with disabilities and promote cooperation and collaboration of organizations for the people with disabilities
- Member organizations: 20
- Members: organizations for people with disabilities
- Role: improving the welfare of persons with disabilities and promoting cooperation and collaboration of organizations for the people with disabilities

### 【Priorities】

- 1) To realize safe and sound daily life and social life for people with disabilities
- 2) To promote information sharing and opinion exchange about measures related to welfare for persons with disabilities

## National Association of Public Welfare Work Organizations

- ★ An association of “four nation-wide organizations supporting people with difficulty to live”
- Member organizations: 4
- Members: National Council of Relief Institutions, National Association of Residential Rehabilitation & Independence Support Institutions, National Council of Welfare Facilities for People with Disabilities, and National Association of Protective Facilities for Women
- Role: connecting four organizations supporting self-reliance of needy people

### 【Priorities】

- 1) To tackle materialization of support for self-reliance of needy people (information sharing, etc.)
- 2) To support people who have difficulties in their lives and need help (strengthening of support function to take a role of safety-net in their communities, etc.)

## Association of Organizations for Health and Welfare for the Elderly

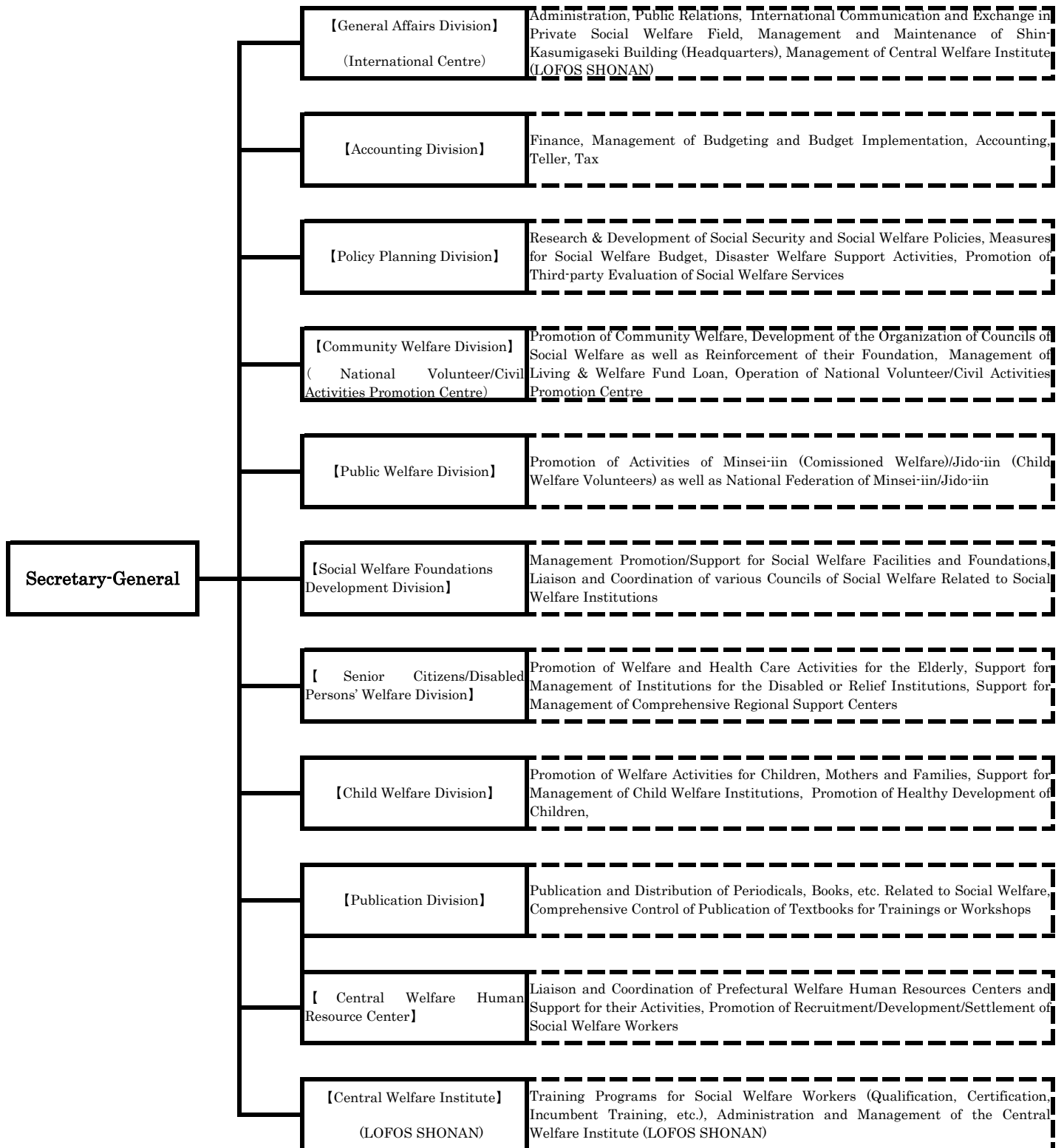
- ★ Building developmental collaboration system of organizations supporting care and welfare for the elderly
  
- Member organizations: 2
- Members: national organizations in the field of health and welfare for the elderly
- Role: focusing on the affiliation with service of JNCSW related with welfare for the elderly, etc. to realize an inclusive community society, to meet political challenges looking ahead the 2040 problem, etc.

### 【Priorities】

- 1) Cooperation/collaboration through attendance to various committees of JNCSW
- 2) Cooperation through meetings with other wide-range organizations working in the field of care/welfare for the elderly
- 3) Cooperation/collaboration with various works related to welfare for the elderly conducted by JNCSW

# OVERVIEW OF JNCSW

## Structure



## Shin-Kasumigaseki Building



【3-3-2 Kasumigaseki, Chiyoda-ku, Tokyo, Japan】

Shin-Kasumigaseki Bldg. is a national center of social welfare completed in 1987. On the Lobby Floor, there is an auditorium called “Nadao Hall” which is used as a place of the grand gathering of social welfare workers including various meetings, seminars, national assemblies, etc.

## Central Welfare Institute (LOFOS SHONAN)



【1560-44 Kami-Yamaguch, Hayama-cho, Miura-gun, Kanagawa 240-0197, Japan】

In 1995, Central Social Welfare Training Center was renamed as Central Welfare Institute (LOFOS SHONAN: Lofos means “hill” in Greek.) and moved to Hayama-cho in Kanagawa. Newly constructed LOFOS SHONAN is a comprehensive training center with accommodation facilities, and various training courses or distance learning program for qualification are planned and implemented here.

## Finance of JNCSW

〈Fiscal Year 2021 Financial Results〉

Service Program Income		Service Program Expenses	
JPY6,688,376,000-		JPY5,845,615,000-	
Program income	47.9%	Program cost	45.5%
Membership fee*/share/contribution	30.8%	Personnel expenses	21.2%
Donation	2.1%	Office expenses	10.5%
Subsidy/grant/deposit	18.5%	Share/grant/contribution	9.4%
Others	0.7%	Others	13.3%

\*) Membership fee of classified councils are included.

## Towards the prosperous welfare society through nation-wide network of social welfare workers

Cooperation & Collaboration



### Municipal Councils of Social Welfare

1,825 places

130,000 staff members

They are working in your most familiar area where you live.

### Council of Social Welfare in Prefectures/Cabinet-Order Designated Cities

67 places

17,000 staff members

They are working for the better community welfare in wider area.

### Japan National Council of Social Welfare

1 place

132 staff members

As a national-level organization of Municipal Councils of Social Welfare and Council of Social Welfare in Prefectures/Cabinet-Order Designated Cities, it works for the better communication between service users and service providers or other affiliates as well as program support, system improvement, etc.

### Classified Councils, Social Welfare Associations

15 classified councils

3 social welfare associations

They are organizations of Minsei-iin/Jido-iin (commissioned welfare/child welfare volunteers) and other professionals working in social welfare foundations, social welfare institutions, etc. in social welfare field.